



PRODUCT OVERVIEW



DESIGNED & MANUFACTURED BY



INSPIRE THROUGH DESIGN

SurFlex adds character to any building

SurFlex is Sobotec's single skin modular panel system. Formed panels interlock to create a rain screen system free of clips and extrusions. Efficient design, automated production and rapid installation makes SurFlex a high performance, cost-effective panel system.

The clean finish of SurFlex provides a modern and contemporary look to facades. A vast array of inspirational design possibilities is available through various materials, colours, finishes, sizes and depths.



SURFLEX AESTHETIC OPTIONS

Standard: Panels are flush and offer a creative array of design of patterns and colour possibilities.

Tapered Panels: Create a multi-dimensional textured effect with an array of protruding panel surfaces, sloped at varying angles, directions and depths.

3D Panels: Enhance the look and feel of any façade with a bold three-dimensional design of staggered panels with varied depths and sizes.

Perforated Image Panels: Add an unforgettable perforated image, abstract design or pattern on any size of facade.

STANDARD

TAPERED

3-DIMENSIONAL

PERFORATED

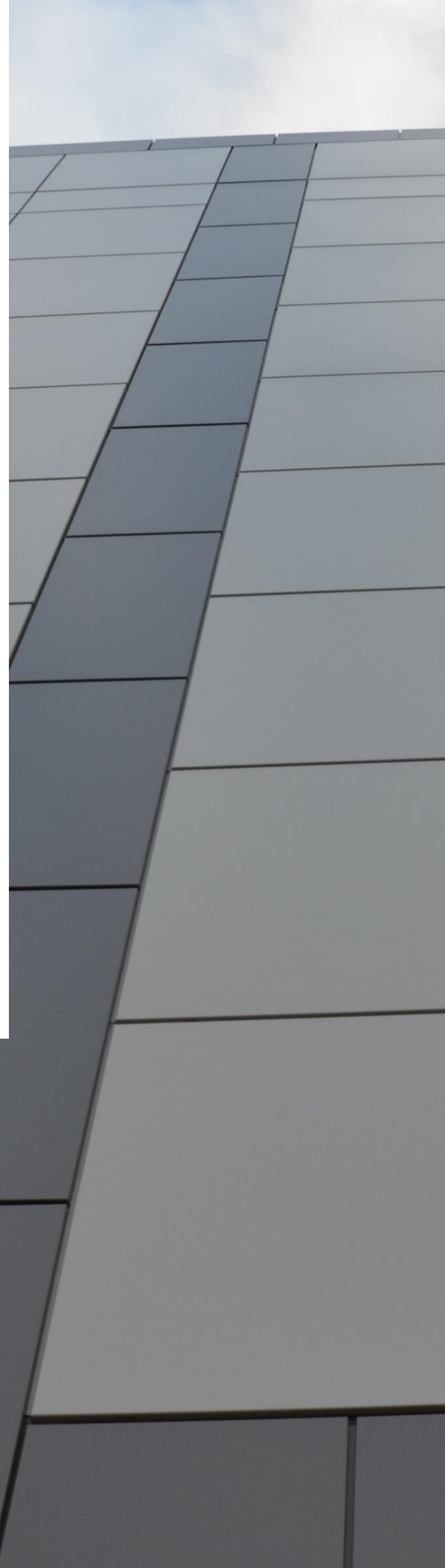


PERFORMANCE & ENGINEERING

SurFlex is a modular, single-skin pressure equalized rainscreen panel system which has been tested to AAMA 508. Modular panels create a pressured equalized rainscreen system that does not require clips or extrusions. SurFlex eliminates exposed rivets and fasteners at the panel perimeter, providing a crisp, clean appearance. SurFlex has been proven and tested to the following specified performance requirements:

ASTM E1233	Cyclic Static Air Pressure
ASTM E330	Structural Performance
ASTM E283	Air Infiltration
ASTM E331	Water Penetration
AAMA 508	Pressure-Equalized Rainscreen System

Sobotec's SurFlex panel system is adaptable to different project conditions. Our system design allows for modifications without sacrificing performance. The system integrates with flashings, closures and trims manufactured by Sobotec. Selecting a single source provider like Sobotec allows for efficient integration of these key building elements creating a rain screen system which meets the highest design and performance requirements.



PRODUCT FEATURES

- No accessories, extrusions or clips required.
- AAMA 508 Pressure Equalized Rainscreen System
- Customizable joint widths and joint depths
- Quick and easy assembly
- Numerous design, aesthetic and pattern possibilities



STANDARD SURFLEX

Panels are flush and offer a creative array of design of patterns and colour possibilities.





TAPERED SURFLEX

Create a multi-dimensional textured effect with an array of protruding panel surfaces, sloped at varying angles, directions and depths.

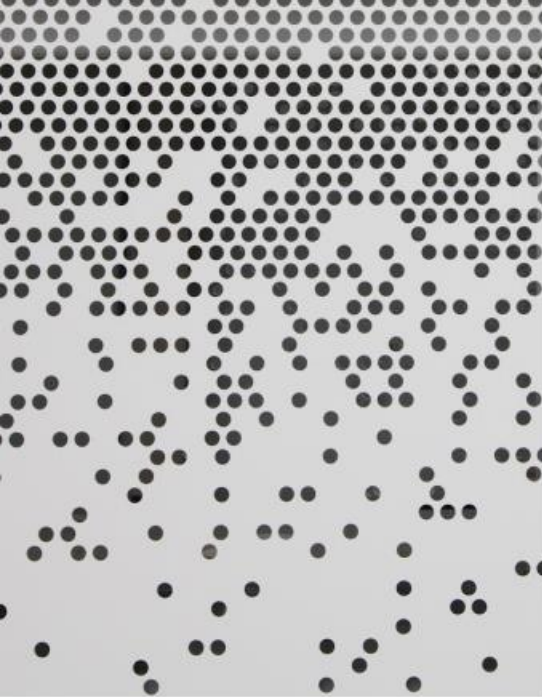




3-DIMENSIONAL SURFLEX

Enhance the look and feel of any façade with a bold three-dimensional design of staggered panels with varied depths and sizes.





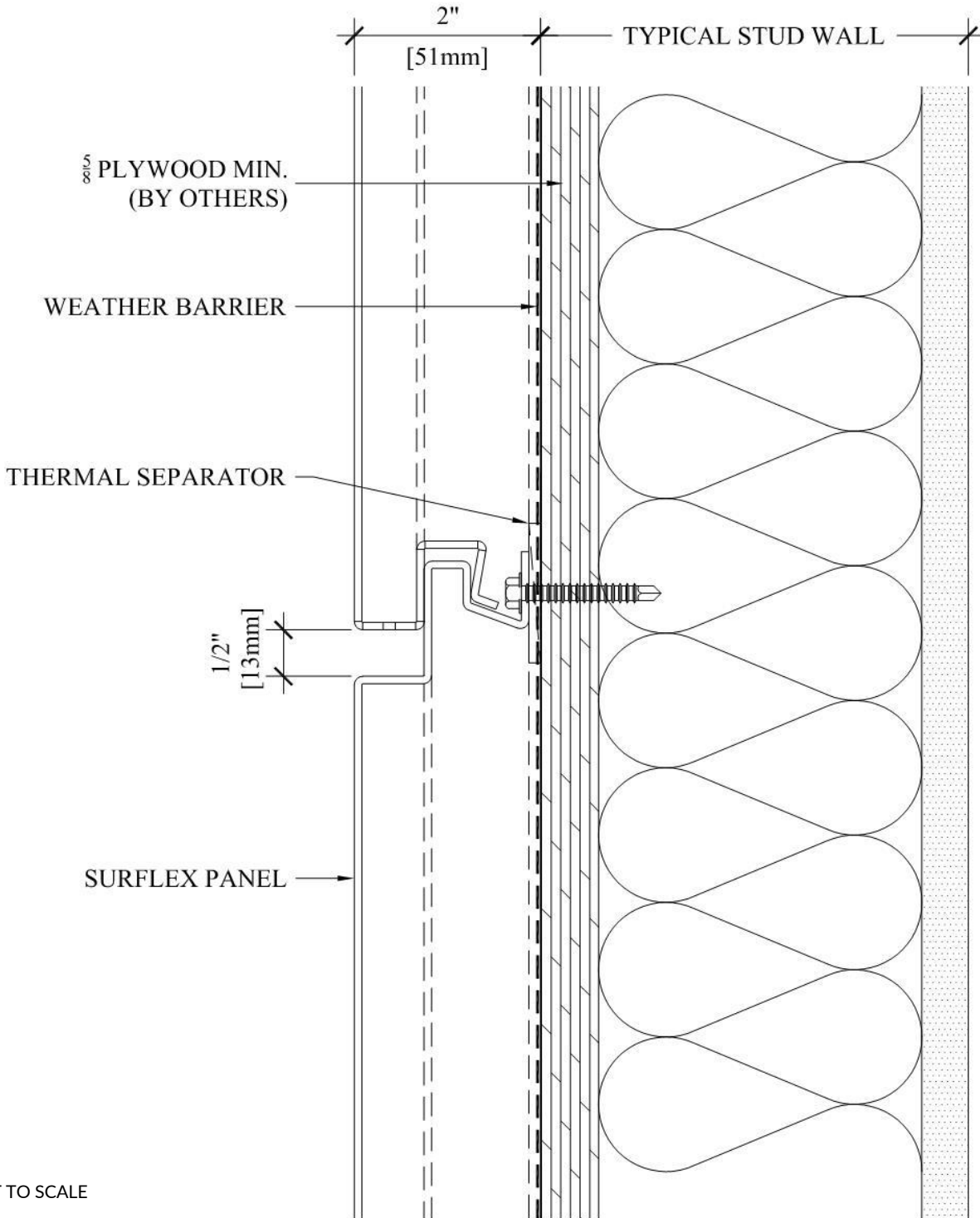
PERFORATED SURFLEX

Add an unforgettable perforated image, abstract design or pattern on any size of facade.



TECHNICAL DETAILS

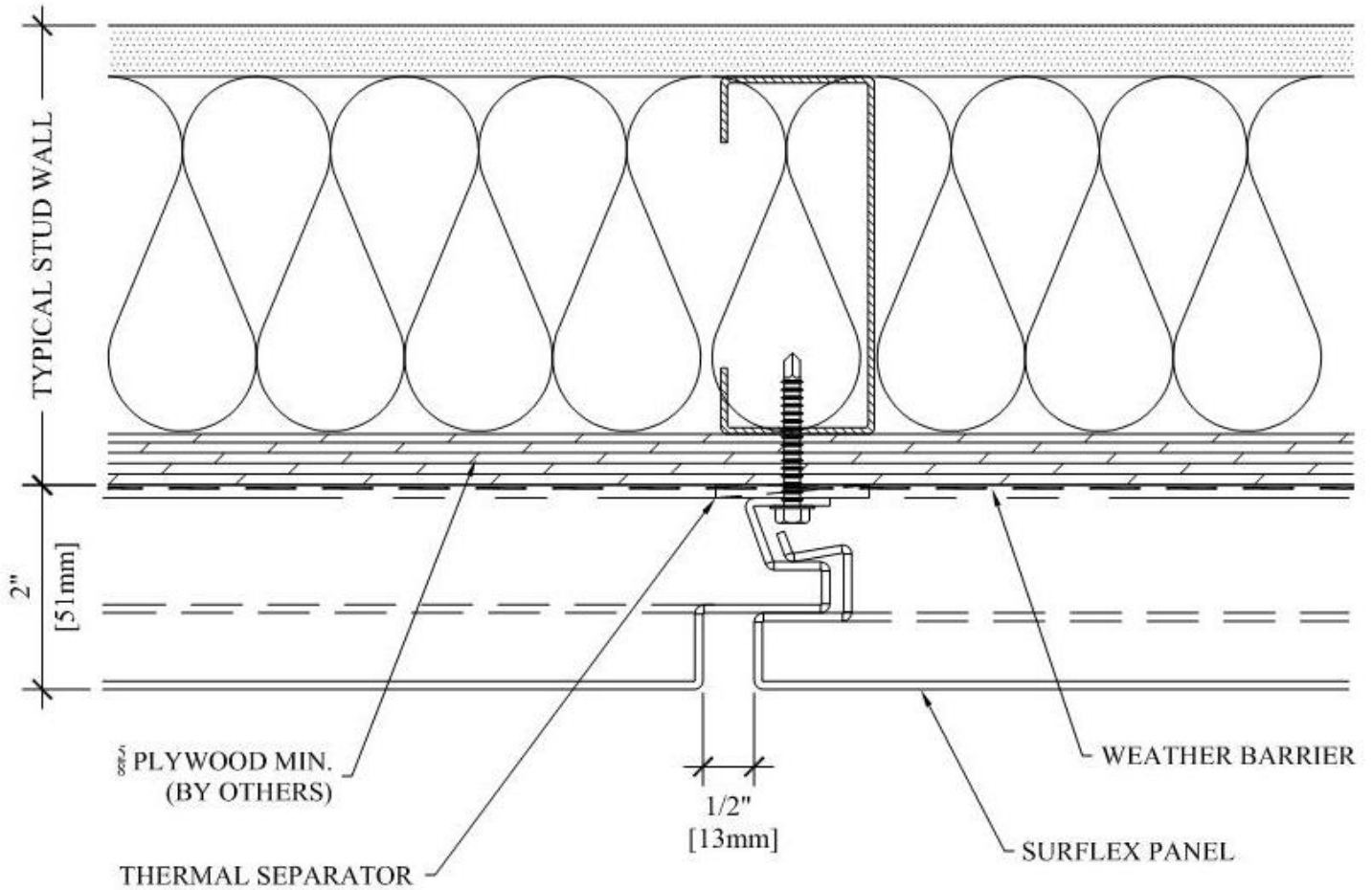
HORIZONTAL JOINT DETAILS



NOT TO SCALE

TECHNICAL DETAILS

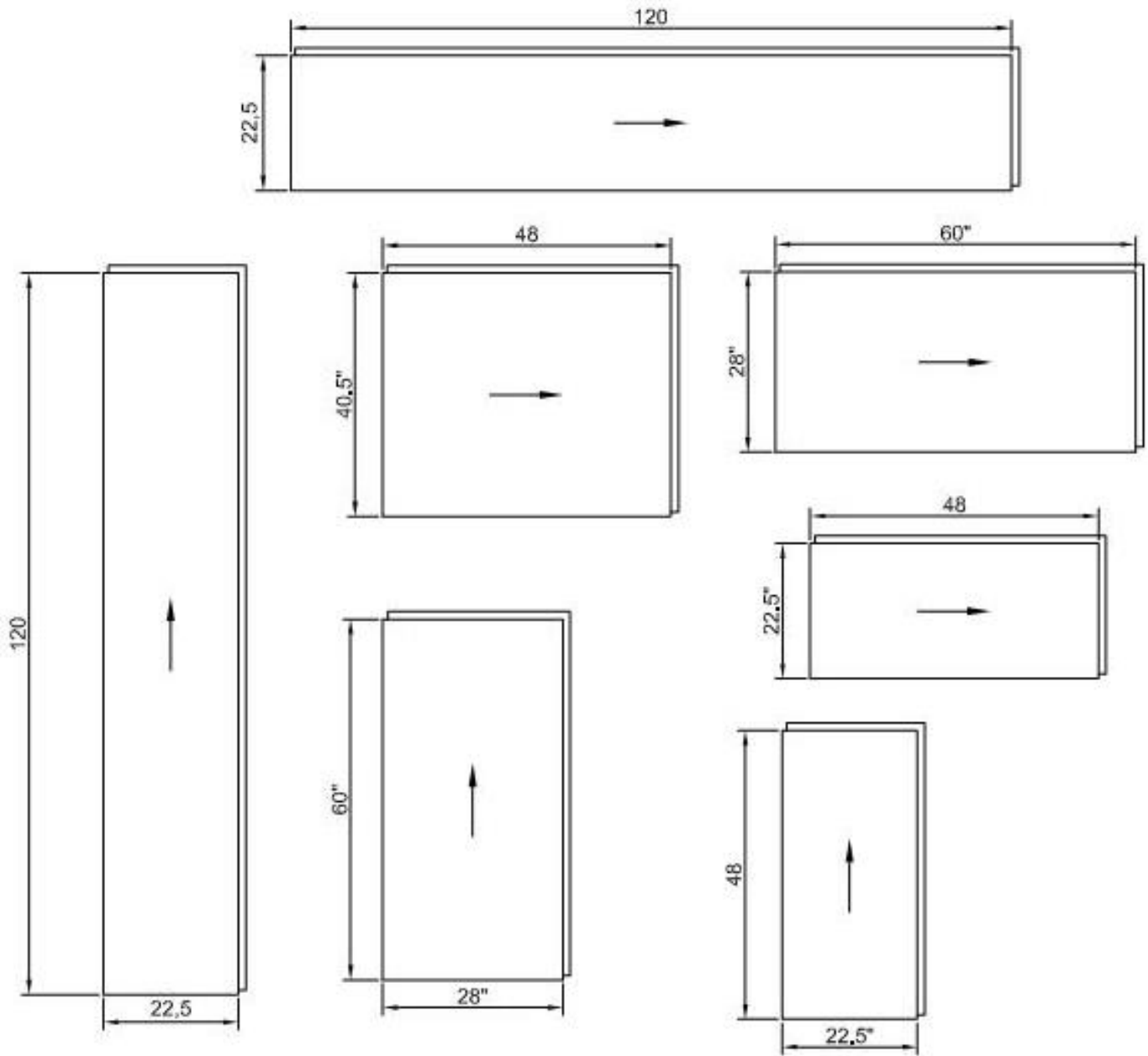
VERTICAL JOINT DETAILS



NOT TO SCALE

TECHNICAL DETAILS

MOST EFFICIENT PAINTED
ALUMINUM PANEL SIZES



STANDARD SURFLEX



Product Specifications

Standard System Depth	2"
Return Height	¾"
	<i>Other Depths Available Depending on Design Option</i>
Materials	Aluminum, Zinc, Copper
Material Thickness	.08" standard for Aluminum, 1mm for Zinc and Copper. <i>Other gauges are available.</i>
Panel Joints	½" nominal standard to 2" for Aluminum, ½" nominal standard for Zinc and Copper
Finish	Aluminum available in all SurFlex finishes and colours. Zinc available in Pre- weathered Blue Gray, Pre- Weathered Graphite Gray, Bright Rolled. Copper available in Natural and Pre-patina.
Weight	Less than 2 pounds per square foot

TAPERED SURFLEX



Product Specifications

Standard System Depth	2" - 5 ¼"
Return Height	¾" - 4"
Materials	Aluminum, Zinc, Copper
Material Thickness	.08" standard for Aluminum, 1mm for Zinc and Copper. <i>Other gauges are available.</i>
Panel Joints	½" nominal standard to 2" for Aluminum, ½" nominal standard for Zinc and Copper
Finish	Aluminum available in all SurFlex finishes and colours. Zinc available in Pre- weathered Blue Gray, Pre- Weathered Graphite Gray, Bright Rolled. Copper available in Natural and Pre-patina.
Weight	Less than 2 pounds per square foot

3-DIMENSIONAL SURFLEX



Product Specifications

Standard System Depth	2" - 5 1/4"
Return Height	3/4" - 4"
Materials	Aluminum, Zinc, Copper
Material Thickness	.08" standard for Aluminum, 1mm for Zinc and Copper. <i>Other gauges are available.</i>
Panel Joints	1/2" nominal standard to 2" for Aluminum, 1/2" nominal standard for Zinc and Copper
Finish	Aluminum available in all SurFlex finishes and colours. Zinc available in Pre- weathered Blue Gray, Pre- Weathered Graphite Gray, Bright Rolled. Copper available in Natural and Pre-patina.
Weight	Less than 2 pounds per square foot

PERFORATED SURFLEX



Product Specifications

Standard System Depth	2" - 5 ¼"
Return Height	¾" - 4"
Materials	Aluminum, Zinc, Copper
Material Thickness	.08" standard for Aluminum, 1mm for Zinc and Copper. <i>Other gauges are available.</i>
Panel Joints	½" nominal standard to 2" for Aluminum, ½" nominal standard for Zinc and Copper
Finish	Aluminum available in all SurFlex finishes and colours. Zinc available in Pre- weathered Blue Gray, Pre- Weathered Graphite Gray, Bright Rolled. Copper available in Natural and Pre-patina.
Weight	Less than 2 pounds per square foot

ALUMINIUM

MATERIALS

Colours, Finishes & Sizes

- Tables show recommended panel sizes for optimal lean manufacturing with zero-waste.
- **Contact us** to discuss other size formats available.

ZINC

System Characteristics & Testing

Material	Aluminum, Zinc, Copper, Stainless Steel
Joint Type	Dry
Standard Joint Size	1/2" Nominal Standard Up To 2" Depending On Material
Testing	Tested to AAMA 508 Standard, ASTM E330, ASTM E283, ASTM E331
Wall Design	Pressure Equalized Rainscreen System


COPPER

INDUSTRY LEADERSHIP

Surflex is designed and manufactured by Sobotec Ltd., the industry leader and pioneer of rainscreen architectural panel systems. Sobotec's proven track record in developing and engineering breakthrough products and systems has helped lead and advance the building industry for the past 30 years.

Understanding all aspects of the design – build process, SurFlex provides superior cost and performance benefits. Visit Sobotec.com to learn more.





AUTOMATED MANUFACTURING

SurFlex panels are manufactured in North America with state-of-the-art robotic equipment.

Large volumes of panels are processed quickly and efficiently with incredible precision.

The automated production process maximizes and optimizes sheet material, while ensuring quality. The end result is a lower cost of production, less waste and one of the most cost-effective, high-quality panel products on the market.

DESIGN-ASSIST

No matter the complexity, configuration or scope of your project, Sobotec's knowledgeable staff possesses the experience and expertise to successfully execute the technical and functional requirements of your project.

Whether it is a consultation on your project, discussion of unique architectural features, customization or providing ways to optimize your initial design, feel free to get in touch with us and discuss your project with our technical team members.



SurFlex[™]
Modular Panel Systems

QUICK & EASY INSTALLATION

SurFlex has formed panels which directly fasten to the building substrate. The profiles of each panel interlock and eliminates the need for clips, extrusions and other accessories.

This method of attachment provides a simple and accelerated installation process.



SurFlex™
Modular Panel Systems



SUSTAINABILITY

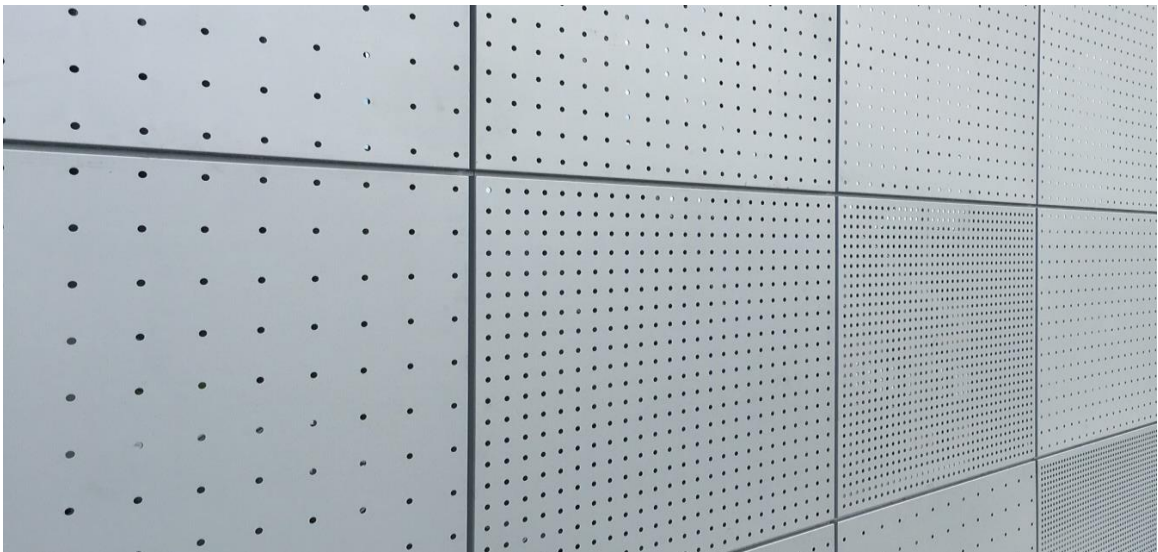
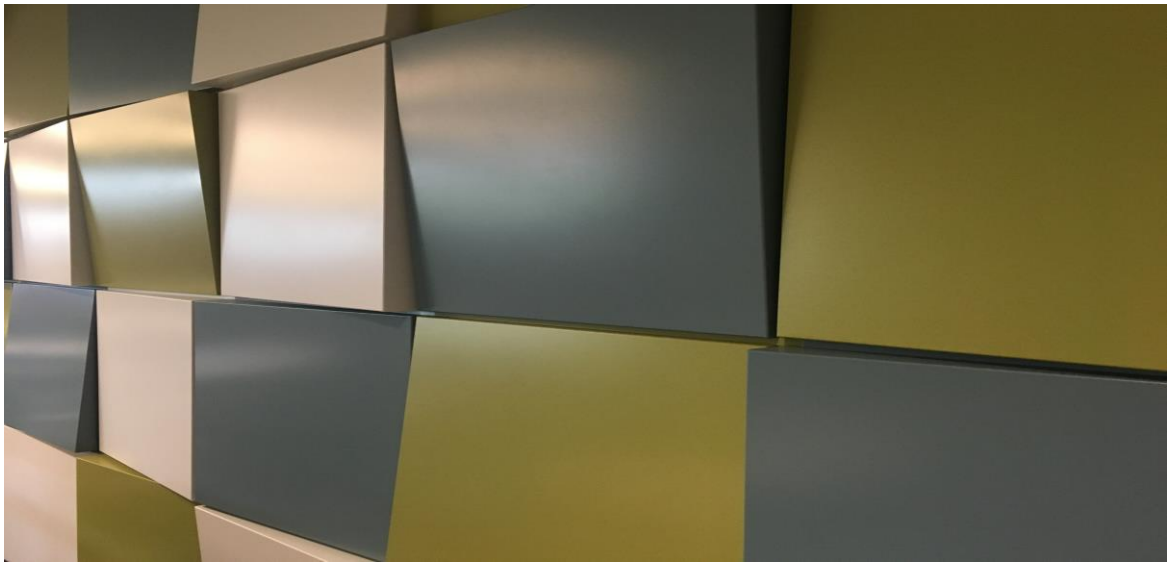
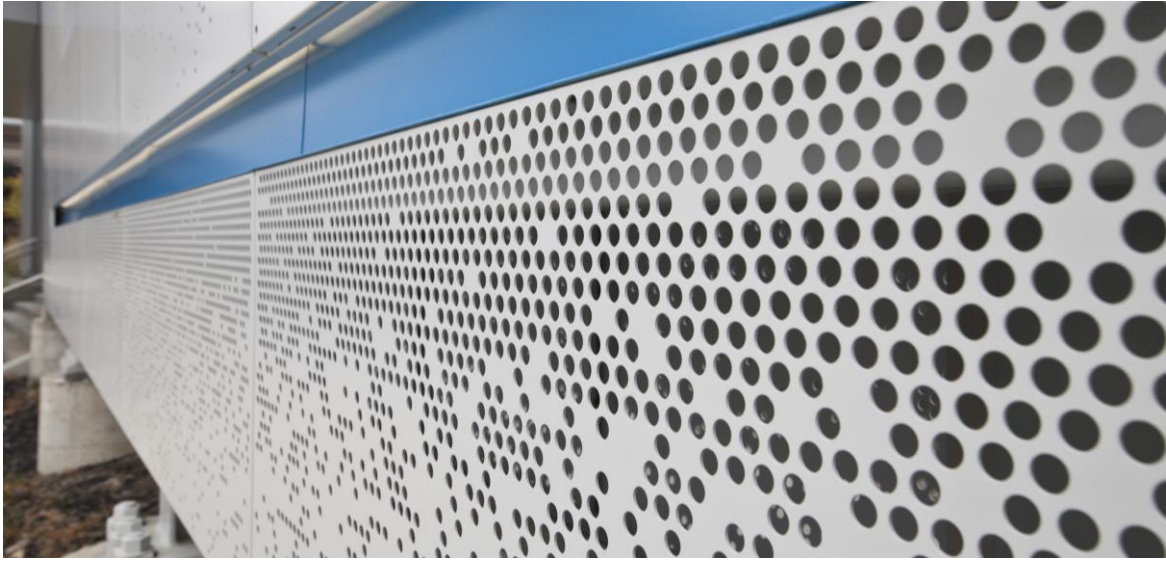
All SurFlex panel systems are made in North America, using recycled material.

Applicable for LEED credits, SurFlex provides a high degree of sustainability as the panel system can be recycled at the end of the products lifecycle.

Manufactured using a lean process, SurFlex can help projects to achieve zero-waste and reduces their overall environmental impact and carbon footprint.









SurFlex™
Modular Panel Systems

