

SLT-CLIP
THERMAL FRAMING CLIP

 **SOBOTEC**
ADDING STRUCTURE TO VISION

www.sobotec.com

A NEW STANDARD IN THERMAL CLIPS

Achieve Greater Energy-Efficiency

Sobotec's SLT-Clip is a framing clip that minimizes and reduces thermal bridging caused by wall assemblies and their components. Our SLT-Clip provides a significant thermal break between the assembly, allowing the full R-Value of the building's insulation to be realized by creating an insulated buffer between conductive components.

The SLT-Clip is made out of heavy duty Galvalume™ which has proven superior performance as a building material. Galvalume™ is the proprietary name for galvanized steel that has been finished with a patented alloy coating composed of 55% aluminum and approximately 45% zinc by weight.

This unique combination provides the extended durability of aluminum and the galvanic protection of zinc, in addition to exceptional corrosion resistance that is more than two-times that of galvanized steel.

Note: Thermal separator optional based on specification requirements.

SLT-CLIP



INDUSTRY LEADERSHIP

Advancing the Building Industry

Designed and manufactured by Sobotec Ltd., the industry leader and pioneer of rainscreen architectural panel systems.

For the past 30 years, Sobotec's proven track record in developing and engineering breakthrough products and systems has helped lead and advance the building industry.

Understanding all aspects of the design-build process, Sobotec's SLT-Clip provides superior cost and performance benefits.

When compared to other thermal clips, our SLT-Clip stands out as one of the most cost-effective and economical options in the market today allowing wall assemblies to meet and exceed ASHRAE 90.1 energy-efficiency goals.

PERFORMANCE & ENGINEERING

- Thermal Performance Testing by Morrison Hershfield
- Structural Testing by Intertek
- Made Exclusively in North America By Sobotec
- Non-Combustible
- Economical and extremely cost-effective
- Made out of durable, heavy-duty Galvalume
- Effective in all climate zones

ENERGY EFFICIENCY & SUSTAINABILITY

- Meets & Exceeds ASHRAE 90.1 Requirements
- Significantly improves R-Values
- Contributes to LEED Credits
- Manufactured from naturally sourced materials
- Assists in reducing building carbon footprint

SIMPLE INSTALLATION & ASSEMBLY

- Horizontal and Vertical configurations
- Adjustable to allow for better alignment.
- Universal Design for CI Systems
- Installs on all building substrates
- Can be used with several types of insulation
- For use in new or retrofit construction projects
- Multiple sizes available



THE SLT-CLIP ADDRESSES THE NEEDS OF THE BUILDING INDUSTRY

Architects

Easy to specify with design flexibility.

Engineers

Meets & exceeds ASHRAE 90.1

Builders

Extremely cost effective

Installers

Simple assembly and installation.

Owners

Improved energy-efficiency

Occupants

Increased comfort

PROVEN PERFORMANCE & ENGINEERING

Designed For The Building Industry

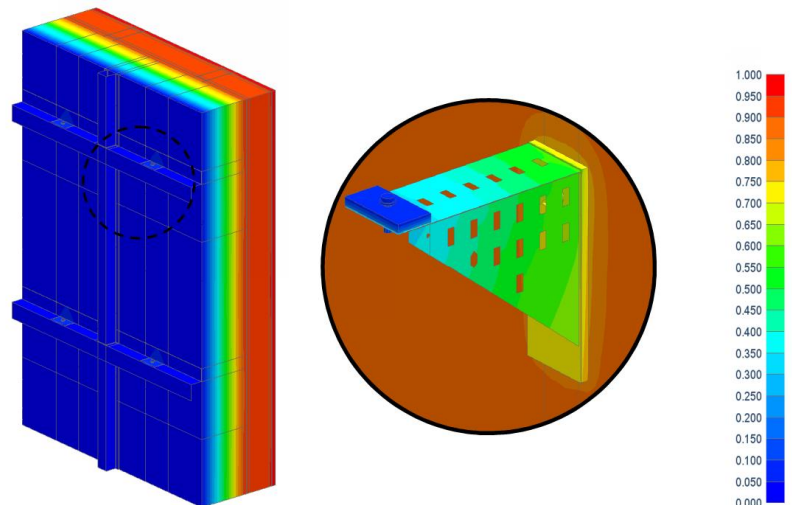
The SLT-Clip was developed on sound engineering principles with proven real-world performance and testing. Architects and engineers now have the certainty to specify a high-performing product that achieves their design goals.

The Sobotec SLT-Clip meets and exceeds ASHRAE 90.1 standards by creating a thermal break as an intermittent structural attachment for cladding projects requiring continuous insulation systems. For an optimized thermal break, the SLT-Clip has an optional PVC thermal separator which acts as an insulated buffer assisting in the reduction of thermal bridging at the clip.

This ultimately results in better thermal performance by reducing thermal transmission through the exterior insulated wall assembly as analyzed and tested by Morrison Hershfield Building Envelope Consultants.

Further testing by Intertek shows that the SLT-Clip is engineered for all specific structural, and building load requirements. It is also non-combustible and has the durability to withstand the elements such as wind and snow. For more information on testing or system details, please visit www.Sobotec.com.

The Sobotec SLT-Clip meets and exceeds ASHRAE 90.1 standards.



Thermal Resistance for Exterior Insulated Steel Study Wall Assemblies with SLT-Clip

Clip Name	Exterior Insulation Thickness (in)	Exterior Insulation Nominal R-Value ^{B1} hr·ft ² ·°F/BTU (m ² K/W)	Assembly Effective R-Value
			hr·ft ² ·°F/BTU (m ² K/W) 24" Vertical Spacing
SLT-3	3	12.6 (2.22)	R-13.0 (2.29)
SLT-4	4	16.8 (2.96)	R-15.7 (2.76)
SLT-5	5	21.0 (3.70)	R-18.3 (3.22)
SLT-6	6	25.2 (4.44)	R-20.8 (3.67)

Temperature profile for Base SLT System with 6" exterior insulation and thermal separators and clips spaced 24" on centre steel stud wall with no interior insulation

INSTALLATION & ASSEMBLY

Simple & Easy Installation, Saving Time & Money

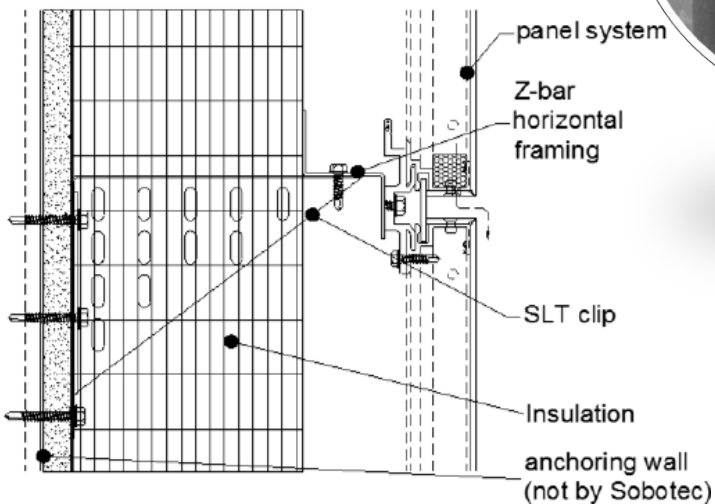
Sobotec's SLT-Clip installs quicker and easier than other thermal clips on the market.

Our SLT-Clip is simply anchored in place with self-drilling fasteners and installs on all building substrates and structures such as concrete, steel studs, wood, and masonry. It can also be used with several types of insulation.

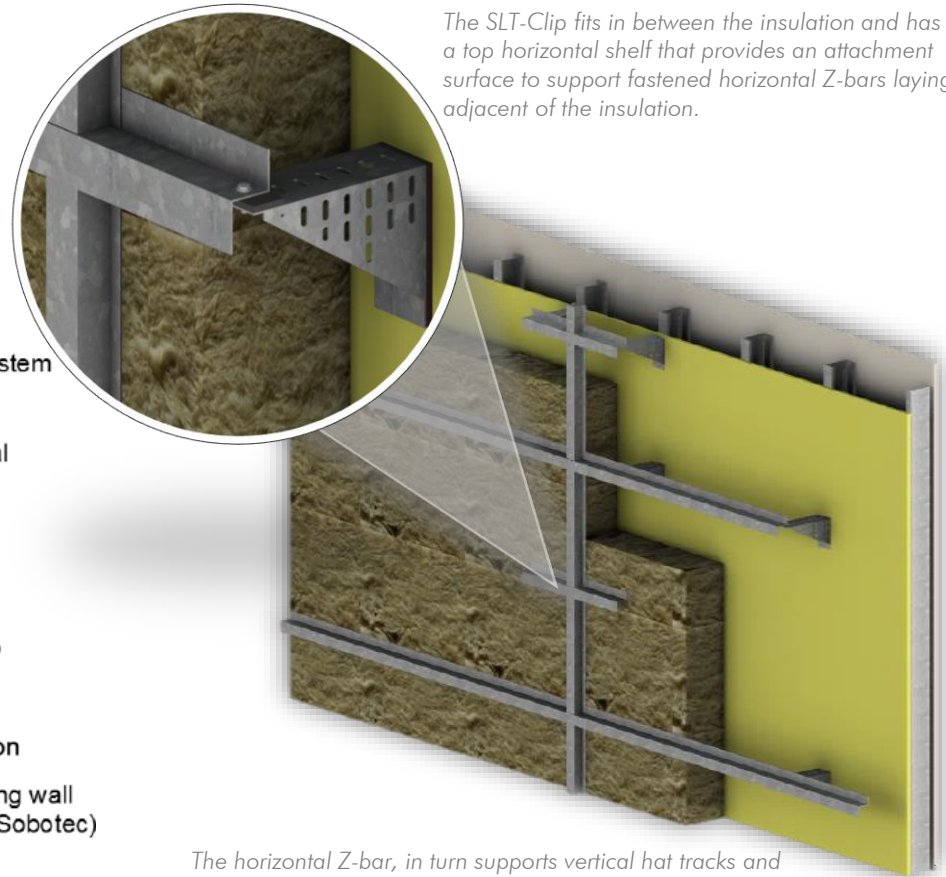
Engineered with a universal design for continuous insulation systems, the SLT-Clip supports industry standard wall-cladding systems and is available in custom sizes.

For adjustments or alignment, the SLT-Clip has multiple slots that also assist in providing effortless fastening and attaching to the horizontal z-girts or vertical hat tracks which support rain-screen cladding systems.

The SLT-Clip fits in between the insulation and has a top horizontal shelf that provides an attachment surface to support fastened horizontal Z-bars laying adjacent of the insulation.



Section Cut At Horizontal Joint



The horizontal Z-bar, in turn supports vertical hat tracks and cladding panels. The SLT-Clip also allows for both horizontal and vertical installations.

Available in Standard & Custom Sizes



Sobotec Ltd.
67 Burford Road
Hamilton, Ontario
L8E 3C6, Canada

P: 905-578-1278
F: 905-578-1446
E: sales@sobotec.com
W: www.sobotec.com

For More Information or
Details Please Visit:
Sobotec.com/slt-clip